

# ASSEMBLY INSTRUCTIONS

## Wooden Drawer / Trash Can for TB18 (NOT including TB18 & 1/8" Drill Bit)

### KIT PARTS LIST

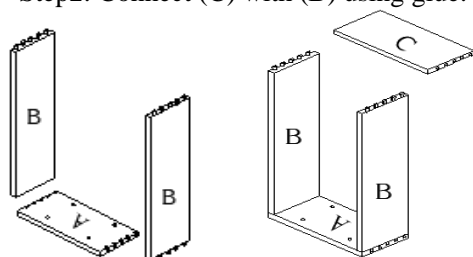
**A-Drawer Front(1) B-Drawer Sides(2) C-Drawer Rear(1) E-Slides(1 pair) F-Trash can(1 pair)**

### HARDWARE PARTS LIST

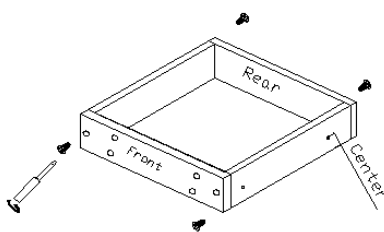
**6-Screw( $\Phi 4*25$ -8pcs) 7-Screw( $\Phi 3.5*12$ -8pcs) 8-Screw( $\Phi 3.5*12$ -16pcs) 9-L shape Metal(2 pairs)**

Step1: Connect (A) with (B) using glue.

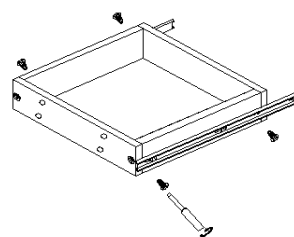
Step2: Connect (C) with (B) using glue.



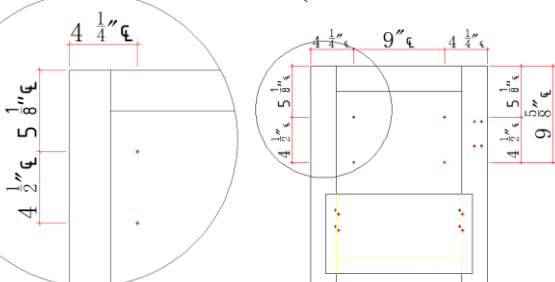
Step3: Fixing Drawer using 6-screws(4pcs).



Step4: Mount short parts of (E) on each (B), using 7-screws(4pcs).

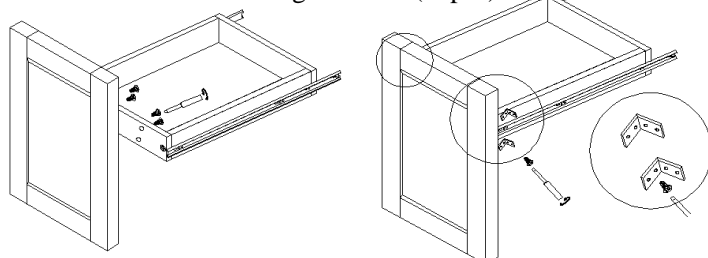


Step5: **Must Predrill the Pilot Hole (1/4" Depth or less) on Back of Door of TB18. (Recommend 1/8" drill bit)**

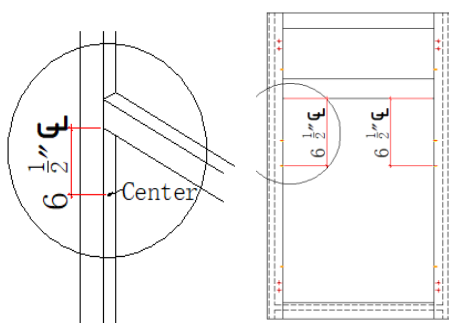


Step6-1: Connect Drawer to Door, using 6-screws(4pcs)

Step6-2: Fixing (9) L-shape metal on Door & Drawer, using 8-screws(12pcs).



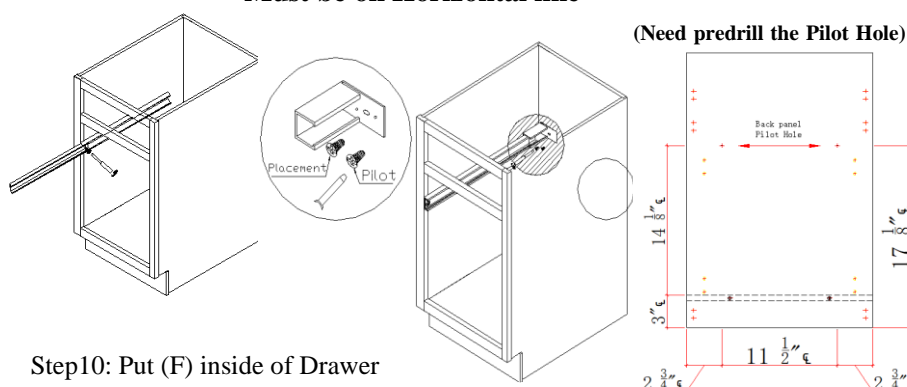
Step7: **Must Predrill the Pilot Hole (1/4" Depth or less) on Face Frame of TB18. (Recommend 1/8" drill bit)**



Step8-1: Mount long parts of (E) on Face Frame and

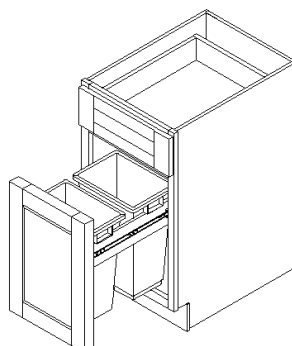
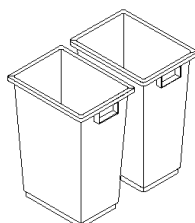
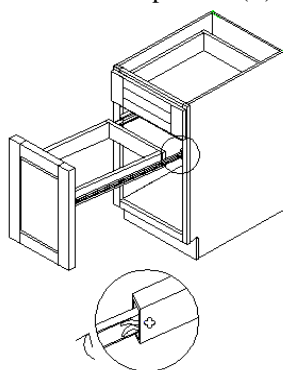
Step8-2: Mount Rear Brackets of (E) on Back Panel, using 7-screws(4pcs).

**Must be on Horizontal line**



Step9: Connect two parts of (E) slide together

Step10: Put (F) inside of Drawer



(Placement at any hole of Bracket, using 8-screw 2pcs)